

Single Mass Analysis

Tolerance = 5.0 PPM / DBE: min = -1.5, max = 120.0

Element prediction: Off

Number of isotope peaks used for i-FIT = 3

Monoisotopic Mass, Even Electron Ions

5 formula(e) evaluated with 1 results within limits (all results (up to 1000) for each mass)

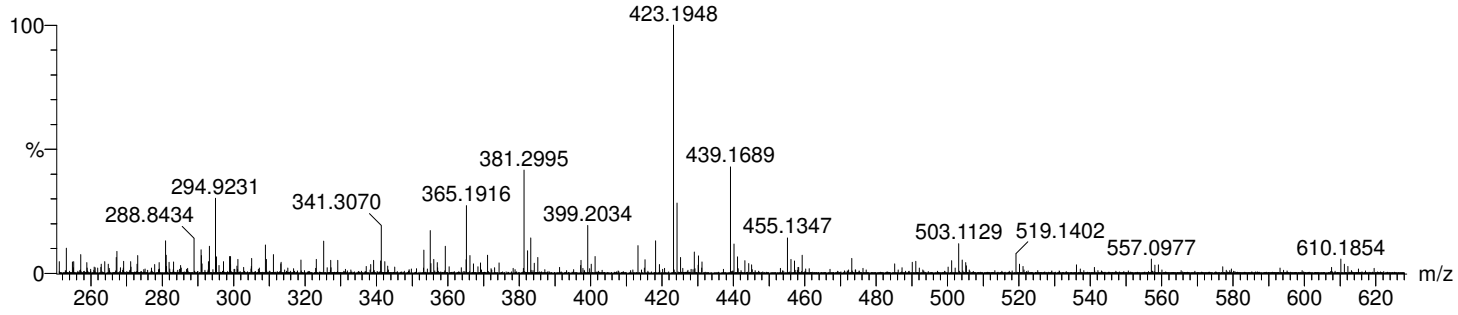
Elements Used:

C: 6-27 H: 5-28 O: 0-3 Na: 0-1

CyrBn2RanisoIe

UNE BGreatrex CyrBn2RanisoIe 139 (3.312) Cm (129:158)

1: TOF MS ES+
5.66e+004



Minimum: -1.5
Maximum: 55.0 5.0 120.0

Mass	Calc. Mass	mDa	PPM	DBE	i-FIT	i-FIT (Norm)	Formula
423.1948	423.1936	1.2	2.8	13.5	348.3	0.0	C27 H28 O3 Na